

MODULE BOARD

STORAGE FACILITIES, AGRICULTURAL WAREHOUSES

Designed for heavy-duty applications
cars, trucks and machinery.

Easy to install and remove.



Module Board X40

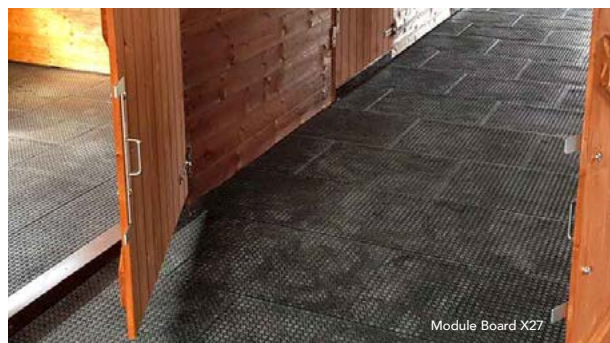


Module Board X40



Module Board X40

Interlocking tiles protect and stabilize floors temporarily or permanently.



Module Board X27

Interlocking ramps
Length : 51 cm
Male and female locking

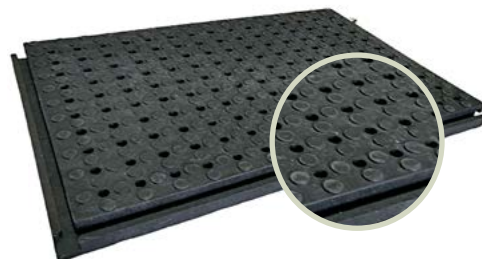
MODULE BOARD X27mm



MODULE BOARD X40mm



MODULE BOARD DRAINAGE



DRAIN AND STABILIZATION TILES






Module Board X27

**HEAVY DUTY
FLEXIBLE FLOOR
100% RECYCLED PVC
MADE IN FRANCE**



Module Board X27

Module Board is a heavy duty portable flooring solution. It is a hard wearing tile that can be adapted to a wide range of different types of ground for protection of stabilization purposes. Its interlocking system makes installation and removal quick and easy, with no tools or adhesives required, thus reducing downtime.

Technical Data Sheet	Standards	Module Board X27 Recycled	Module Board X40 Recycled	Module Board DRAINAGE Recycled
Thickness	EN 4282	27mm	40mm	27mm / 40mm
Diameter of surface circles		20 mm and 8 mm 	28 mm 	20mm (diameter of drain openings : 20mm) 
Dimensions (mm)	EN 426	1000 x 685mm (0.685 m ²)	1000 x 685mm (0.685 m ²)	1000 x 685mm (0.685 m ²)
Article code		MBOA27	MBOA40	MBOA27-DR / MBOA40-DR
Weight	EN 430	24.8kg/m ² (17kg/tile)	36.5kg/m ² (25kg/tile)	24kg/m ² (16.5 kg/tile) / 36.5kg/m ² (25kg/tile)
Maximum resistance *		up to 20t./m ²	up to 40t./m ²	up to 15t./m ² / up to 35t./m ²
Fire resistance	NF EN 9239-1 NF EN 11925-2	Good fire resistance	Good fire resistance	Good fire resistance
Colours		Black	Black	Black

* Maximum resistance is indicative and not contractual. Due to the recycling process, differences in colour and texture may appear, as well as small white spots. Dimensional variations (+/-3%) are also possible.



Module Board drainage X40

