

MODULE *DECOR* LOCK PUZZLE TILES



CL 1030

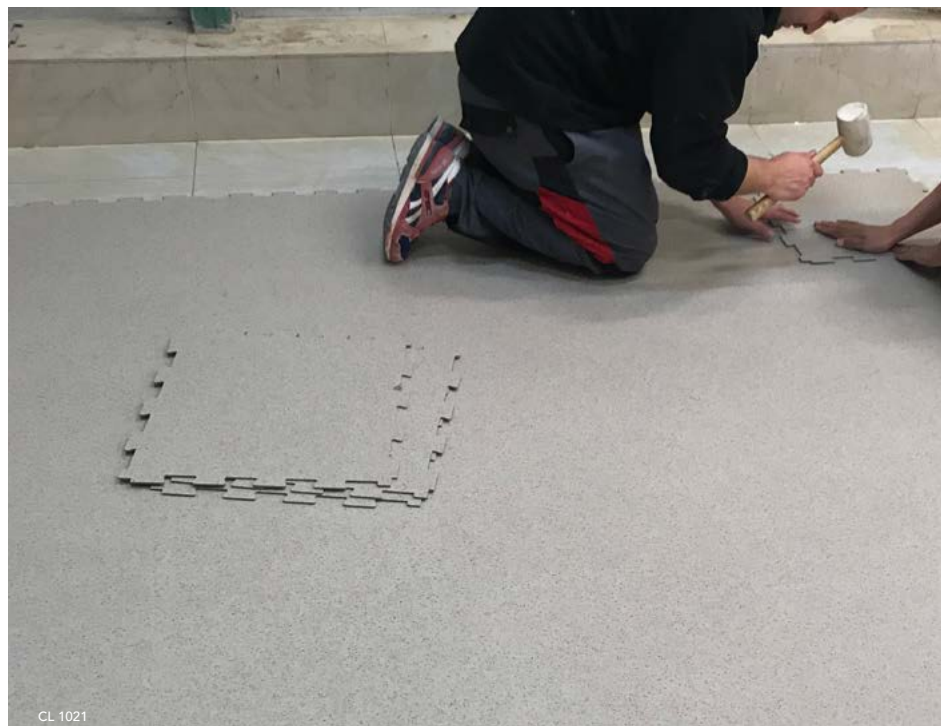


CL 1021

Its puzzle interlocking system allows a quick installation, without glue and without stopping your activity, because Modularity rhymes with flexibility!



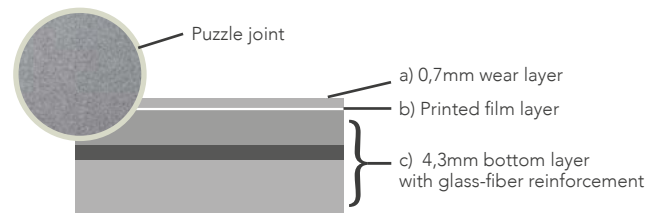
CL 1020



CL 1021

non-contractual photos

Composition of the **MODULE DECOR** Lock 5mm range :
An interlocking flooring for areas with very high pedestrian traffic, it is strongly recommended to glue areas with rolling traffic as well as those exposed to sunlight or heat.



Description	Module Decor Lock
Article code	MDEC5LO
Thickness and hardness	5 mm
Interlocking system	Puzzle joint
Maximum resistance **	- 4 wheels forklifts up to : 2 t. - 3 wheels forklifts (rubber wheels) up to : no available - Manual pallet truck up to : 0,5 t.
Finish (no waffle back)	PU Matt
Dimensions (mm)	Tiles 457,2 x 457,2 mm
Weight / tile	8kg
Pack size / box m ²	10 tiles / box (2,09 m ²)
Colors available	9
Service rules *Average time noted after confirmation of the order	Delivery within 5 working days, contact us for orders > 300 m ²

Technical datasheet	Norms	Module Decor Lock
Abrasion	EN 660-2	Group P
Castor wheel	EN 425	No damage
Indentation	EN 433	< 0,10 mm
Fire class	EN 13501-1	Bfl-S1 : very good fire resistance
Electrical resistance	EN 1081	≤10 ¹⁰ Ω
Electrostatic behavior	EN 1815	2kV
Slip Resistance (Europe)	EN13893	Anti slip DS
Slip Resistance (Germany)	DIN 51130	R10
Chemical resistance	EN 423	>6 BWS : Very good
Light Fastness	EN 20105	7BWS / 5GSR : excellent (>100 years)
Subfloor heating	ISO 8302	Compatible
Sound absorption	ISO 140-8	12 Db
European classification	ISO 10582 :2010	

** Indicative and non-contractual maximum resistance. Each environment requires a free diagnosis from Module Floors and gluing tiles might be required. Mandatory gluing in case of contact with the sun or temperatures <0°C et >20°C. 2K PU glue available on request. 2K PU glue available on request.



9 designs are available in PVC tiles format (457,2 x 457,2 mm)

