

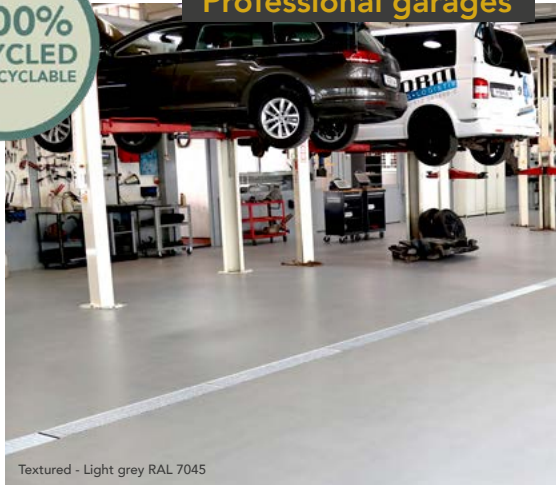


MODULE GARAGE

GARAGES, MECHANICAL WORKSHOPS, DEALERSHIPS

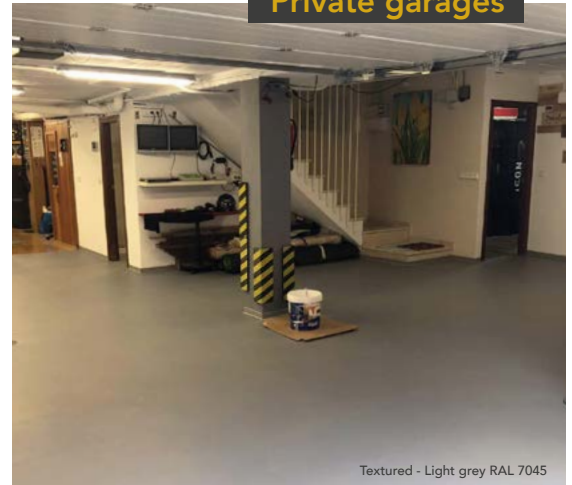
≈ 100%
RECYCLED
100% RECYCLABLE

Professional garages



Textured - Light grey RAL 7045

Private garages



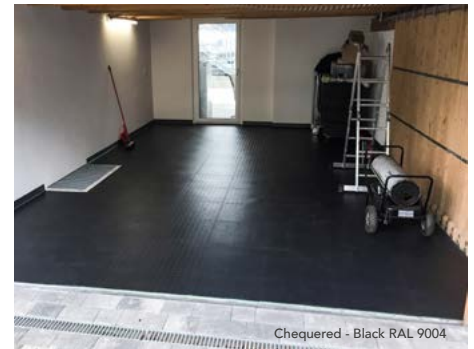
Textured - Light grey RAL 7045

No downtime and no dust.

Removing and replacing a damaged tile takes only a few minutes.



Textured - Black RAL 9004



Chequered - Black RAL 9004

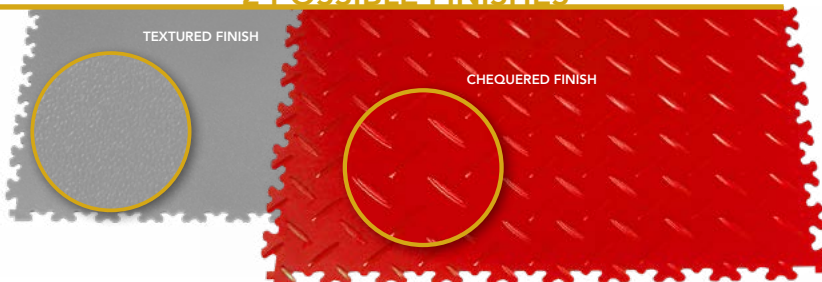


Grainy - Black RAL 9004 - Red RAL 3020

R10 anti-slip finish.

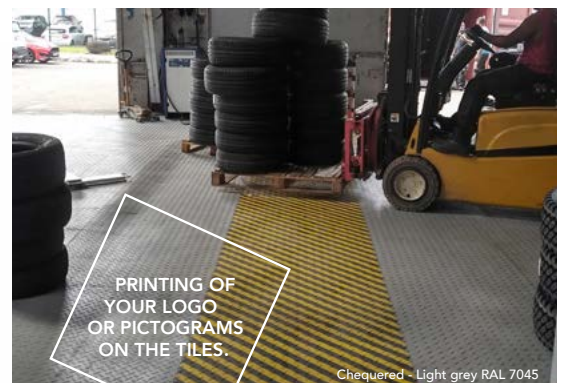
Can cover uneven, damp and dusty floors.

2 POSSIBLE FINISHES



TEXTURED FINISH

CHEQUERED FINISH



PRINTING OF
YOUR LOGO
OR PICTOGRAMS
ON THE TILES.

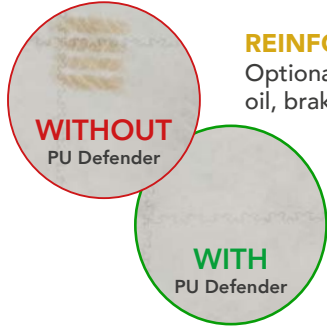
Chequered - Light grey RAL 7045

PROFESSIONAL GARAGE

PRIVATE GARAGE

MODULE GARAGE 7mm
Withstands light and heavy vehicles
up to 4 tons*

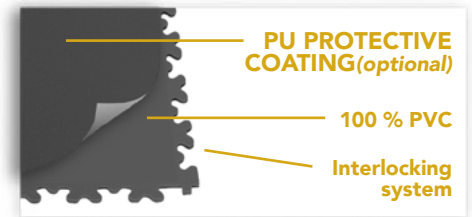
MODULE GARAGE 4mm
Withstands light vehicles
up to 2 tons*



REINFORCED PROTECTION

Optional PU protective coating to protect the tiles against engine oil, brake fluid, petrol and reduces the migration of the rubber.

We strongly recommend the use of the PU protective coating in professional garages, workshops, showrooms and exhibition spaces.



Description	Module Garage X7	Module Garage X4	Module Garage RECYCLED
Thickness and hardness	7 mm Shore A 95	4 mm Shore A 95	7 mm Shore A 82
Interlocking system	X-joint		
Dimensions (mm)	500 x 500	500 x 500	500 x 500
Article code	MGAR7GR (textured) or MGAR7TL (chequered)	MGAR4GR (textured) or MGAR4TL (chequered)	MGAR7GRRE (textured) or MGAR7TLRE (chequered)
Maximum resistance * (rubber wheels and PU only)			
4-wheel forklift :	up to 2.5 t.	complete gluing required	complete gluing required
3-wheel forklift :	up to 1,5t.	complete gluing required	complete gluing required
Retractable mast fork lift truck :	up to 1,5t.	complete gluing required	up to 1 t.
Manual pallet truck :	up to 1 t.	complete gluing required	complete gluing required
Electric pallet truck :	up to 4 t.	up to 2 t.	up to 2 t.
Finish (waffle back)	Textured (Smooth) or Chequered		
Tiles and weight per m ²	4 tiles / 9,5 kgs	4 tiles / 6 kgs	4 tiles / 9,5 kgs
Weight / tile	2,37 kgs	1,5 kgs	2,37 kgs
Pack size / box m ²	8 tiles / box (2 m ²)	12 tiles / box (3 m ²)	8 tiles / box (2 m ²)
Delivery within 10 working days, consult us for orders > 300 m ² .			

Available in 7mm
Shore A 82

Available in Shore A 95



Ramps and corners available in all colors.
(Packaging: Bag of 4 simple ramps OR Bag of 4 corner ramps)

Technical Data	Norms	Module Garage X7	Module Garage X4
Abrasion	EN 660-2	Group P	Group P
Castor wheel	EN 425	No damage	No damage
Indentation	EN 433	< 0,10 mm	< 0,10 mm
Fire class	EN 13501-1	B _{f1} -S1 : very good fire resistance	B _{f1} -S1 : very good fire resistance
Electrical resistance	EN 1081	≤10 ¹² Ω	≤10 ¹² Ω
Slip resistance (Europe)	EN13893	Anti Slip DS	Anti Slip DS
Slip resistance (Germany)	DIN 51130	R10	R10
Chemical resistance	EN 423	Hydrochloric acid. Ethanol : 96% Methanol : 96%. Acetic acid 100%; Nitric acid 100%, Sulphuric acid 69%, Chromic acid 98%, Toluene 40%, Acetone, Motor oil, Gasoline, Urine	
Light Fastness	EN 20105	7BWS / 5GSR : excellent (>100 years)	
Thermal conductivity	ISO 8302	0,3807m ² K/W	0,218 m ² K/W



** Indicative and non-contractual maximum resistance. Each environment requires a free diagnosis from Module Floors and gluing tiles might be required. Mandatory gluing in case of contact with the sun or temperatures <0°C et >20°C. 2K PU glue available on request. 2K PU glue available on request.

