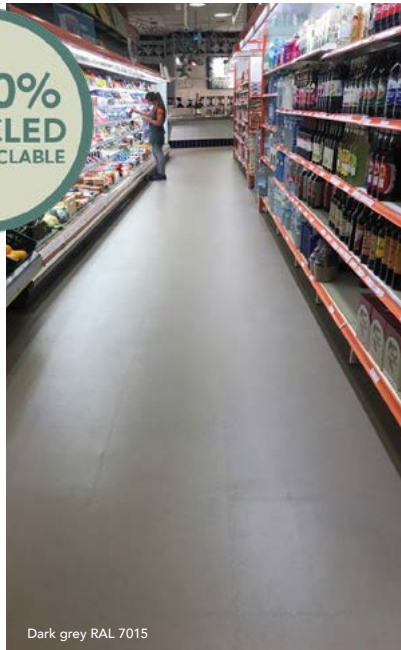


# MODULE *RETAIL*

## RETAIL, SHOPS, OFFICES

The activity can continue while the tiles are being installed  
No dust dispersion.

≈ 100% RECYCLED  
100% RECYCLABLE

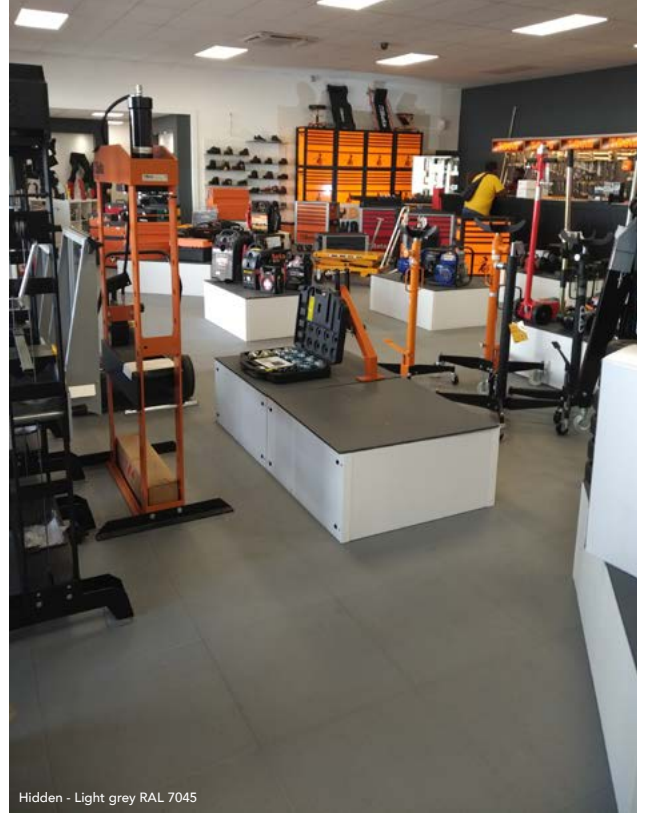


Dark grey RAL 7015

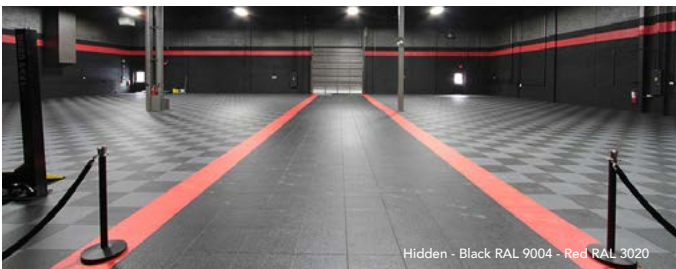
Easy to clean and maintain.

Reduction of ambient noise.

Insulate from cold and humidity.



Hidden - Light grey RAL 7045



Hidden - Black RAL 9004 - Red RAL 3020

R10 anti-slip finish.

Can cover uneven, damp and dusty surfaces.



Recycled - Dark Grey



AVAILABLE IN 100% RECYCLED PVC

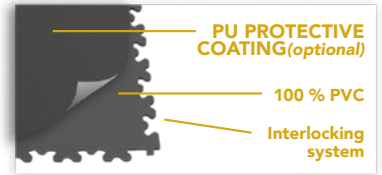


Light grey RAL 7045

# MODULE RETAIL Hidden X5mm and X7mm HIDDEN INTERLOCKING SYSTEM

# MODULE RETAIL X5mm and X7mm PUZZLE INTERLOCKING SYSTEM

- Can cope with very intensive daily traffic and withstands heavy falling objects such as weights (gyms).
- Optional PU protective coating to protect tiles against stains and reduce dirt adhesion.



Description	Module Retail Hidden		Module Retail		Module Retail Hidden RECYCLED		Module Retail RECYCLED	
	X7	X5	X7	X5	X7	X5	X7	X5
Thickness and hardness	7 mm and 5 mm Shore A 95		7 mm and 5 mm Shore A 95		7 mm and 5 mm Recycled Shore A 82			
Interlocking system	Hidden joint		X-joint		Hidden joint		X-joint	
Dimensions (mm)	500 x 500		500 x 500		500 x 500			
Article code	MRET7HI	MRET5HI	MRET7	MRET5	MRET7HIRE	MRET5HIRE	MRET7RE	MRET5RE
Maximum resistance * <small>(rubber wheels and PU only)</small>	complete gluing	complete gluing	complete gluing up to 2,5 t.	complete gluing up to 2 t.	complete gluing	complete gluing	up to 1 t.	up to 1 t.
4-wheel forklift :	complete gluing	complete gluing	up to 1,5t.	complete gluing	complete gluing	complete gluing	complete gluing	complete gluing
3-wheel forklift :	complete gluing	complete gluing	up to 1,5t.	up to 0.5 t.	complete gluing	complete gluing	up to 1 t.	up to 0.5 t.
Retractable mast fork lift truck :	complete gluing	complete gluing	complete gluing	complete gluing up to 1 t.	complete gluing	complete gluing	complete gluing	complete gluing
Manual pallet truck :	light vehicles up to 600kg.	complete gluing	up to 2.5 t.	up to 2 t.	light vehicles up to 600kg.	complete gluing	up to 2 t.	up to 2 t.
Electric pallet truck :	Textured (Smooth back)							
Finish	7 mm : 4 tiles / 9,5 kgs - 5 mm : 4 tiles / 8 kgs							
Tiles and Weight per m <sup>2</sup>	7 mm : 2.37 kgs - 5 mm : 2 kgs							
Weight / tile	7 mm : 8 tiles / box (2 m <sup>2</sup> ) 5 mm : 10 tiles / box (2,5 m <sup>2</sup> )							
Pack size / box m <sup>2</sup>	Delivery within 10 working days, consult us for orders > 300 m <sup>2</sup> .							

### Available in Shore A 82



### Available in Shore A 95



Ramps and corners available in all colors (PVC strips available in Retail Hidden finish per linear meter in grey and black).  
(Packaging: Bag of 4 simple ramps OR Bag of 4 corner ramps)

Technical Data	Norms	Module Retail Hidden X5 and X7	Module Retail X5 and X7
Abrasion	EN 660-2	Group P	Group P
Castor wheel	EN 425	No damage	No damage
Indentation	EN 433	< 0,10 mm	< 0,10 mm
Fire class	EN 13501-1	B <sub>f</sub> -S1 : very good fire resistance	B <sub>f</sub> -S1 : very good fire resistance
Electrical resistance	EN 1081	≤10 <sup>12</sup> Ω	≤10 <sup>12</sup> Ω
Slip Resistance (Europe)	EN13893	Anti Slip DS	Anti Slip DS
Slip Resistance (Germany)	DIN 51130	R10	R10
Chemical resistance	EN 423	Hydrochloric Acid, 96% Ethanol, 96% Methanol, 100 % Acetic Acid, 100 % Nitric Acid, 69% Sulphuric Acid, 98% Chromic Acid, 40% Toluene, Acetone, Engin Oils, Gasoline, Urine.	
Light Fastness	EN 20105	7BWS / 5GSR : excellent (>100 years)	
Thermal conductivity	ISO 8302	0,3807 m <sup>2</sup> K/W	X5 = 0,277 m <sup>2</sup> K/W X7 = 0,3807 m <sup>2</sup> K/W



\* Indicative and non-contractual maximum resistance. Each environment requires a free diagnosis from Module Floors and gluing tiles might be required. Mandatory gluing in case of contact with the sun or temperatures <0°C et >20°C. 2K PU glue available on request. 2K PU glue available on request.

